

# Bill 14

**Changes to Vehicle Inspections due to  
The Traffic and Transportation Modernization Act**



**Manitoba  
Public Insurance**

# Logistics

## About this session

1. Introductions
2. Session Attendance
3. Session Duration

## Session Ground Rules

Please turn off wireless devices

# Agenda

1. Intro to Bill 14: The Traffic and Transportation Modernization Act
2. Regulations Changes
3. Definitions
4. Inspection Handbook Updates
5. New Light Vehicle Items for Inspection
6. Certificate of Inspection (COI) Forms
7. Wrap Up

# Learning Outcomes

1. Describe the intent of The Traffic and Transportation Modernization Act.
2. Understand the requirements for light vehicle inspections outlined in the Vehicle Equipment Regulation.
3. Apply the new Vehicle Equipment Regulation criteria when completing a light vehicle inspection.

# Agenda

- › **Intro to Bill 14: The Traffic and Transportation Modernization Act**
- › Regulations Changes
- › Definitions
- › New Light Vehicle Items for Inspection
- › COI Forms
- › Wrap Up



**Manitoba  
Public Insurance**

# Introduction to Bill 14

## Government of Manitoba Legislation

1. Bill 14, The Traffic and Transportation Modernization Act and proposed regulations will come into force on March 1, 2019.
2. The Traffic and Transportation Modernization Act proposes to make amendments to The Drivers and Vehicles Act (DVA), The Highway Traffic Act (HTA), The Manitoba Public Insurance Act and The Provincial Railways Act. Transportation Infrastructure Act is proposed to replace The Highways and Transportation Act and The Highways Protection Act.
3. Elimination of the Motor Transport Board (MTB) and Highway Traffic Board.

# Traffic and Transportation Modernization Act

## About Bill14

The impact to vehicle inspection is as follows:

- › Sections and subsections within the HTA will be **moved** or **removed**.
- › The Certificate of Inspection process will be aligned with the new vehicle equipment regulations.

# Agenda

- › Intro to Bill 14: The Traffic and Transportation Modernization Act
- › **Regulations Changes**
- › Definitions
- › New Light Vehicle Items for Inspection
- › COI Forms
- › Wrap Up



**Manitoba**  
**Public Insurance**



# Regulation Changes



**Manitoba  
Public Insurance**

# Regulation Changes

## Understanding the Why?

- › Reasons for the current change
  - Equipment standards were scattered throughout The HTA and difficult to locate
  - Many standards were outdated
- › **Specific changes to the Regulations**
  - There are numerous regulations that require specialized attention
  - The following slides cover specific changes

# Regulation Changes

## Section 2.2 (1) Item 18

### Wheel Spray Protection

A body structure, including frame if the body style is body-on-frame, sufficient to safely support the vehicle's other required equipment, the number of persons it is designed to carry and any load within its GVWR. The body structure must:

- (a) include a windshield;
- (b) provide adequate protection to effectively reduce wheel splash or spray to the vehicle's rear and, if the body does not provide adequate splash or spray protection in relation to a particular wheel, the vehicle must be equipped with a fender or mud flap that provides adequate splash and spray protection for the wheel

# Regulation Changes

## Section 2.2 (2)

### Light Vehicles

No requirement for protection from wheel spray if it's registered as a Collector and has a Collector Plate.



# Regulation Changes

## Section 2.4 Item 27

Seatbelts requirements for buses.

"A seat belt assembly

(a) for the driver's seat if the bus was manufactured on or after January 1, 1971 or the driver's seat was originally equipped with a seat belt assembly by the bus's manufacturer; and

(b) for each passenger seat if the bus was manufactured on or after September 1, 2010, unless the bus is

(i) a school bus; or

(ii) a perimeter-seating bus, prison bus or transit bus, as those terms are defined in The Motor Vehicle Safety Regulations."

# Regulation Changes

## Section 2.8 Item 4

Trailers – Gross Vehicle Weight Rating (GVWR) less than 4,500 kg

“If the trailer has a gross weight of 1,360 kg or more, a service brake system capable of safely stopping the trailer and holding it stationary if the trailer

(a) is loaded to any weight within its GVWR;

or

(b) is towing any other vehicles or things that it is allowed to tow under the Act.”

# Regulation Changes

## Section 3.22 (4)

Tinted windows

“An inspection station or person authorized or approved under subsection 141(1) of The Drivers and Vehicles Act may affix a mark to a motor vehicle verifying that light transmission and reflection levels in respect of a window of the motor vehicle comply with this regulation.”

# Agenda

- › Intro to Bill 14: The Traffic and Transportation Modernization Act
- › Regulations Changes
- › **Definitions**
- › New Light Vehicle Items for Inspection
- › COI Forms
- › Wrap Up



**Manitoba**  
**Public Insurance**



# Vehicle Definitions

1

## Light Vehicle

Motor vehicle, other than a motorcycle, moped, motorized mobility aid or snow vehicle, that:

- a) In the case of a motorhome or a truck or other cargo vehicle, has a GVWR less than 4500 kg; or
- b) Is:
  - a) A passenger car
  - b) A multipurpose passenger vehicle, or
  - c) Another passenger vehicle that is designed for carrying fewer than 11 persons, including its driver.

# Vehicle Definitions

## 1

### Modified Vehicle

- a) A vehicle whose frame and/or suspension has been altered from its original design, through substitution of original parts, to an extent that the vehicle ride height is no longer within the manufacturer's ride height specifications; or
- b) A homemade vehicle, u-built vehicle, antique reproduction vehicle or other similar specially constructed vehicle that was not issued a National Safety Mark at the time of manufacture; but does not include a vehicle that is altered by changing its engine or installing frame stiffeners.

# Vehicle Definitions

1

## **Multipurpose Passenger Vehicle**

A motor vehicle having a designated seating capacity of 10 persons or fewer (including the driver) that is constructed either on a truck chassis or with special features for occasional off-road operation, but does not include a passenger car, tractor, air-cushion vehicle, all-terrain vehicle, golf cart, low-speed vehicle, three-wheeled vehicle or truck, or a vehicle imported temporarily for special purposes.

# Vehicle Definitions

1

## **Sport Utility Vehicle**

A multipurpose passenger vehicle that is designated by its manufacturer as a sport utility vehicle (SUV).

# Vehicle Definitions

1

## Critical Viewing Area

Area of a vehicle's windshield that is swept by the OEM windshield wipers.

2

## HID

High intensity discharge.

3

## JIS

Japanese Industry Standard.

4

## SRS

Supplemental restraint system (supplemental inflatable restraints, SIS).

# Vehicle Definitions

1

## LED

Light emitting diode.

2

## Level 1 Leak

Seepage of fluid or liquid that is not great enough to form drops.

3

## Level 2 Leak

Seepage of fluid or liquid that is great enough to form drops, but not great enough to cause the drops to fall during inspection.

4

## Level 3 Leak

Seepage of fluid or liquid that forms drops and is great enough to cause the drops to fall during inspection.

# Vehicle Definitions

1

## Track Width

Distance between the center points of a vehicle's left tire tread and right tire tread.

2

## Scrub line

The scrub line is the plane formed from lines joining the lowest edge of each rim of a vehicle.

# Agenda

- › Intro to Bill 14: The Traffic and Transportation Modernization Act
- › Regulations Changes
- › Definitions
- › **New Light Vehicle Items for Inspection**
- › COI Forms
- › Wrap Up



**Manitoba**  
**Public Insurance**



# Inspection Handbook

## Additional Items to be Inspected

- Light Vehicles



**Manitoba  
Public Insurance**

# New Light Vehicle Items

## Section 1: Power Train

### 1.2 Accelerator Pedal and Throttle Actuator:

- a) pedal and actuator
- b) anti-slip material
- c) throttle position sensor and connections**
- d) mount
- e) linkage and cable
- f) springs



# New Light Vehicle Items

## Section 1: Power Train

### 1.3.1 Fuel System – Gasoline and Diesel

Propane fueled vehicles

National Safety Code Standard 11, Part B, Appendix A

# New Light Vehicle Items

## Section 1: Power Train

### 1.3.2 Electric or Hybrid vehicles

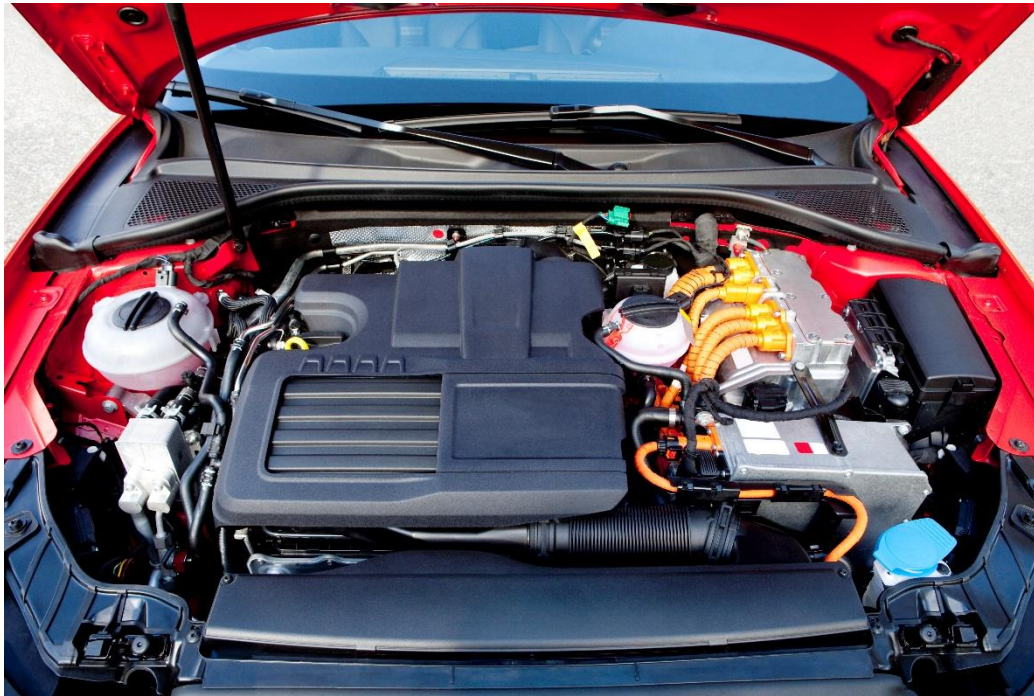
- a) high voltage cable
- b) wiring
- c) electrical system connections
- d) traction motor and generator
- e) traction battery
- f) battery storage area
- g) self-diagnostic or status indicator



# New Light Vehicle Items

## Section 1: Power Train

### 1.3.2 Electric or Hybrid vehicles



# New Light Vehicle Items

## Section 1: Power Train

### 1.7 Constant Velocity Joints, U-joints, Drive Shaft and Differentials

a) constant velocity joint seal (boots)

b) constant velocity joint

**c) u-joints**

d) attachments

**e) centre bearings**

f) slip joint

g) differential

h) drive shaft



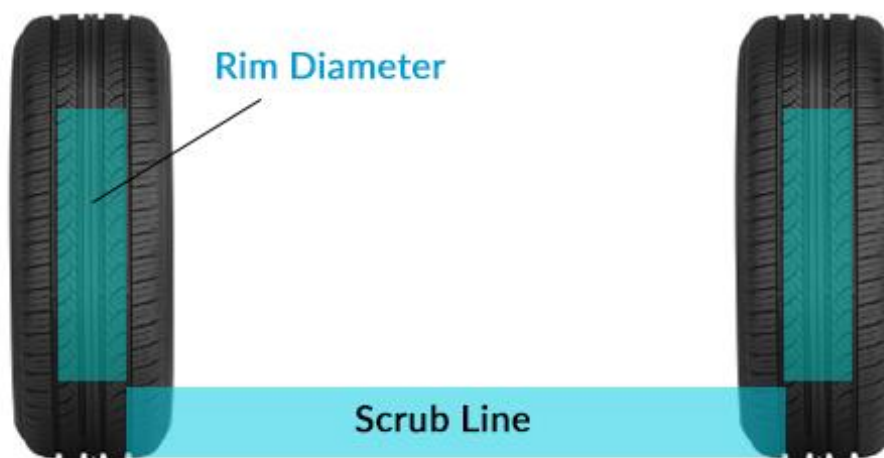
# New Light Vehicle Items

## Section 2: Suspension

### 2.1 Road Clearance

a) clearance between lowest part of the vehicle and a level surface

**b) scrub line**



**Manitoba  
Public Insurance**

# New Light Vehicle Items

## Section 2 Suspension

### 2.2 Ride Height

**a) controls**

b) vehicle height

**c) height of a modified vehicle that is a passenger car**

**d) height of a modified vehicle that is a truck, MPV or SUV**





# New Light Vehicle Items

## Section 2: Suspension

### 2.2 Ride Height



# New Light Vehicle Items

## Section 2: Suspension

### 2.2 Ride Height



# New Light Vehicle Items

## Section 2: Suspension

### 2.2 Ride Height

Front Track Width

---

Frame Height + Body Lift

# New Light Vehicle Items

## Section 2: Suspension

### 2.4 Leaf Springs and Attachments

- a) leaf springs
- b) shackles
- c) hangers
- d) bolts, u-bolts, and nuts
- e) centre bolts
- f) bushings or pivot
- g) torque arms
- h) stabilizer bars, **links**, and bushings
- i) rebound rubber, bump stop and mount
- j) composite springs

# New Light Vehicle Items

## Section 2: Suspension

### 2.5: Coil Springs and Attachments

- a) springs and seats
- b) control arms
- c) torque arms
- d) axial strut
- e) radius arm
- f) stabilizer bars, **links**, and bushings
- g) spacers
- h) rebound rubber, bump stop and mount



# New Light Vehicle Items

## Section 2: Suspension

### 2.6 Air Suspension and Attachments

a) air springs and bag

b) lines and fittings

c) spring mounting

d) compressor

e) tank and reservoir

f) operation

g) rebound rubber, bump stop and mount



h) control arms

i) torque arms

j) axial strut

k) radius arm

j) stabilizer bars, links and bushings

# New Light Vehicle Items

## Section 2: Suspension

### 2.7 Hydraulic Suspension System and Attachments

- a) actuator
- b) hydraulic oil reservoir
- c) hydraulic shock absorber
- d) high pressure pump
- e) accumulator
- f) hydraulic lines
- g) batteries
- h) switches
- i) coil springs



**Manitoba  
Public Insurance**

# New Light Vehicle Items

## Section 2: Suspension

### 2.9 MacPherson

- a) coil spring
- b) control arm
- c) tower
- d) stabilizer bars, **links**, bushings
- e) upper strut bearings**
- f) rebound rubber, bump stop and mount





# New Light Vehicle Items

## Section 2: Suspension

### 2.12 **Front** and Rear Axles

- a) axles
- b) attachment hardware
- c) seals
- d) hubs and flange
- e) spindles

# New Light Vehicle Items

## Section 3 Brakes and Brake Systems

### 3.1 Parking Brake

- a) parking brake
- b) indicator lamp
- c) application
- d) application mechanism
- e) cables
- f) parking brake lining**
- g) parking brake drum and rotor**
- h) parking brake mechanical components



# New Light Vehicle Items

## Section 3 Brakes and Brake Systems

### 3.3 Service Brake Failure Indicator

a) service brake warning indicator lamp

**b) antilock brake system indicator lamp**

# New Light Vehicle Items

## Section 3 Brakes and Brake Systems

### 3.6 Vacuum Brake Booster and System

- a) vacuum brake booster and system
- b) lines and hoses
- c) one way check valve
- d) clamps
- e) low vacuum warning device**
- f) reservoir
- g) reserve



# New Light Vehicle Items

## Section 3 Brakes and Brake Systems

### 3.7 Drum Brakes

- a) brake lining
- b) adjusters
- c) self adjuster cables and linkage
- d) anchor pins, springs and retainers
- e) backing plate
- f) wheel cylinders – **“Additional Inspection Procedure(s):  
Do not disturb dust seals to inspect for leak”**
- g) brake drums
- h) application



# New Light Vehicle Items

## Section 4 Steering

### 4.3 Power Steering System

- a) hoses
- b) pump
- c) cylinders
- d) electrical components**
- e) power steering assist
- f) warning lamp

# New Light Vehicle Items

## Section 4 Steering

### 4.4 Steering Box, Linkage, Rack and Pinion

- a) modifications
- b) tie rods, sleeve and **spherical rod end**
- c) tie rod ends and inner socket assembly
- d) drag link and idler arm
- e) center link and **bell crank**



# New Light Vehicle Items

## Section 4 Steering

### 4.8 Electronic Stability Control (ESC)

a) warning lamp

### 4.9 Electronically Controlled Steering

a) electronically controlled steering



# New Light Vehicle Items

## Section 5 Instruments and Auxiliary Equipment

### 5.2 Automatic Transmission Neutral Safety Switch and Transmission Gear Shift Indicator

- a) automatic transmission neutral safety switch
- b) automatic transmission gear position indicator
- c) **gear shift lever interlock** – missing or inoperative on vehicle manufactured on or after **May 30, 2005. Can not be taken out of** park position without application of the service brake.
- d) manual transmission gear position indicator



# New Light Vehicle Items

## Section 5 Instruments and Auxiliary Equipment

### 5.4 Clutch

- a) clutch
- b) pedal
- c) non-skid pedal surface
- d) clutch switch**

# New Light Vehicle Items

## Section 5 Instruments and Auxiliary Equipment

### 5.5 Auxiliary Equipment

#### **a) auxiliary equipment**



# New Light Vehicle Items

## Section 5 Instruments and Auxiliary Equipment

### 5.7 Trailer Hitch

a) mounting



# New Light Vehicle Items

## Section 6 Lamps

### 6.1 Lamps

a) all lamps

Reject if **“any single LED assembly that is not a headlamp has 25% or more of the LEDs inoperative”**

b) headlamps

**“Note: “E” Code frontal illumination markings are compliant if labeled: C CR C/R HC HC/R”**

c) high beam indicator

d) parking lamps



# New Light Vehicle Items

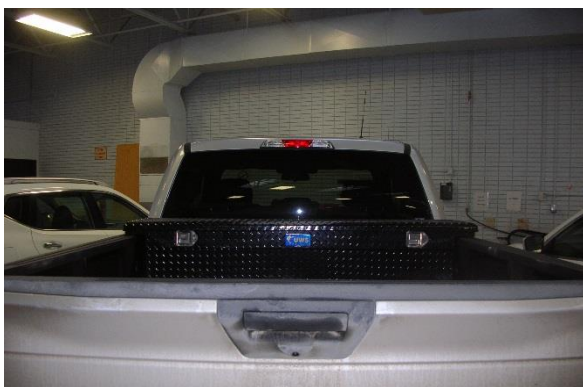
## Section 6 Lamps

### 6.1 Lamps

e) tail lamps

f) stop lamps

**g) centre high-mounted stop lamp**



# New Light Vehicle Items

## Section 6 Lamps

### 6.1 Lamps

h) turn signal lamps

Lights must blink at a certain rate to pass inspection

**Reject if it does not flash between 50 and 130 times per minute.**

i) turn signal indicators

j) hazard warning lamps and indicator

k) **number plate lamp(s)**



# New Light Vehicle Items

## Section 6 Lamps

### 6.1 Lamps

l) side marker lamps

m) backup lamps

**n) clearance lamps**

**o) identification lamps**

p) daytime running lamps

q) fog lamps

r) high beam driving lamps





# New Light Vehicle Items

## Section 6 Lamps

### 6.1 Lamps

s) low beam driving lamps

**t) side turn signal repeaters**



# New Light Vehicle Items

## Section 6 Lamps

### 6.1 Lamps

#### **u) off-road lamps**



# New Light Vehicle Items

## Section 6 Lamps

### 6.1 Lamps

v) under vehicle lamps

w) cargo lamps – **non-OEM lamp does not display SAE or DOT**

# New Light Vehicle Items

## Section 6 Lamps

### 6.2 Prohibited Lighting



# New Light Vehicle Items

## Section 8 Body

**“When mechanic conducting an inspection is in doubt as to the integrity of a structural component, written verification of compliance from an OEM or Manitoba Public Insurance accredited repair facility is required.”**



**Manitoba  
Public Insurance**

# New Light Vehicle Items

## Section 8 Body

### 8.1 Hood and Safety Catch

- a) hood
- b) primary and secondary latches

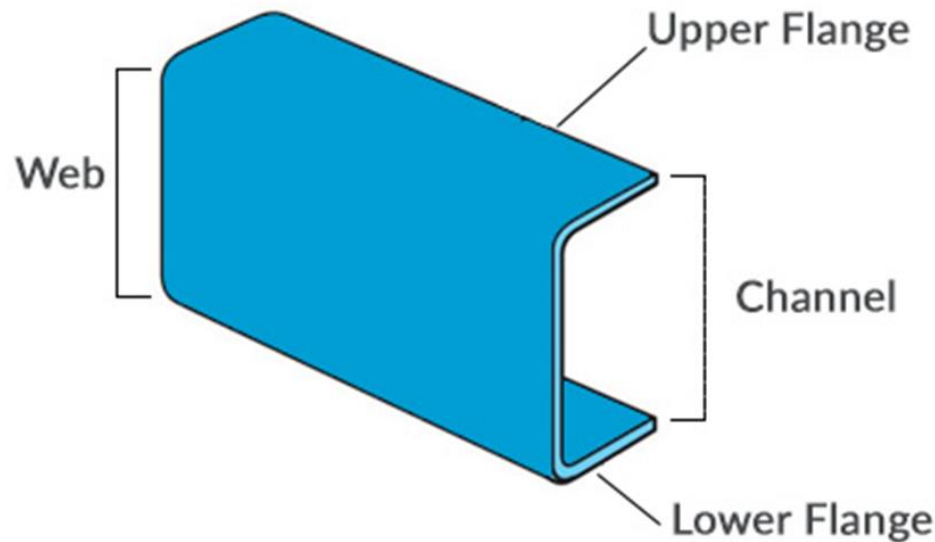
“Note: Latches include items such as **hood pins**, dzus fasteners, and similar retainers”

- c) hinges

# New Light Vehicle Items

## Section 8 Body

### 8.2 Conventional Body

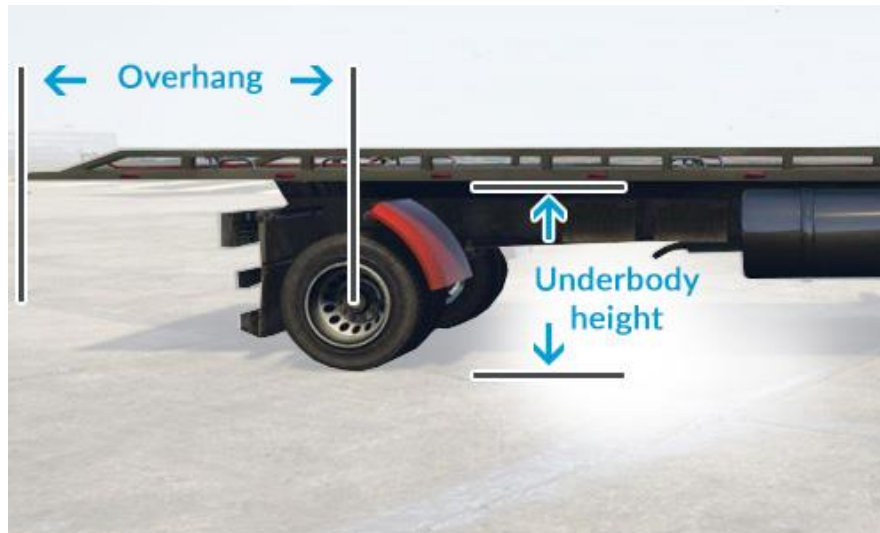


# New Light Vehicle Items

## Section 8 Body

### 8.2 Conventional Body

- a) protrusion
- b) rear quarter panels and inner wheel housing
- c) wheel spray protection**



**Manitoba  
Public Insurance**



# New Light Vehicle Items

## Section 8 Body

### 8.2 Conventional Body



# New Light Vehicle Items

## Section 8 Body

### 8.2 Conventional Body

#### e) structural components

- doors
- rear quarter fenders
- floor bracing
- roof bracing
- rocker panel
- cab corners

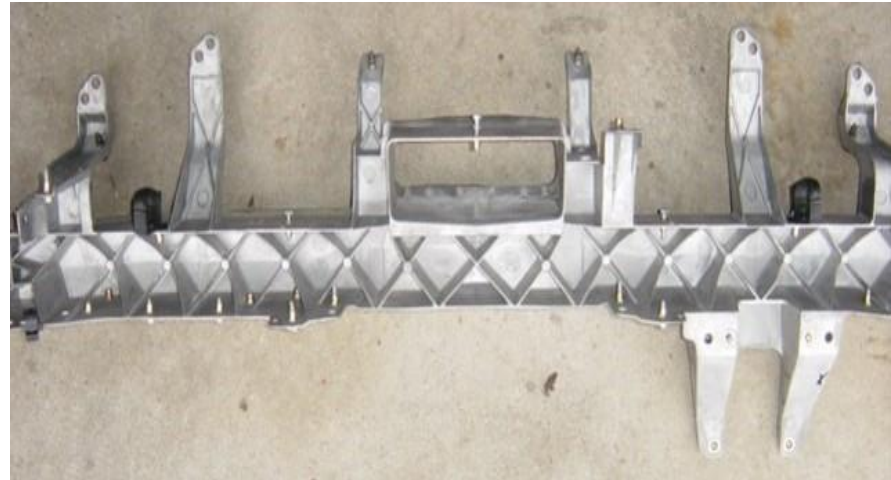


# New Light Vehicle Items

## Section 8 Body

### 8.4 Bumpers

#### a) bumper and rebar



# New Light Vehicle Items

## Section 8 Body

### 8.5 Doors, Trunk Lid, Hatch, Rear Cargo Doors

a) doors, trunk lid, hatch, rear cargo doors

Reject if:

- missing on any vehicle that is not a modified vehicle
- **inferior, perforated, or seal(s) missing**



# New Light Vehicle Items

## Section 8 Body

### 8.7 Windshield

a) condition

**b) tinting and obstructions**

c) type

**d) view**



# New Light Vehicle Items

## Section 8 Body

### 8.8 Windows

#### a) front sides



# New Light Vehicle Items

## Section 8 Body

### 8.8 Windows

b) rear side and rear

**“Note: Vehicles with aftermarket rear-side and rear window tinting must have both outside rear view mirrors.”**



# New Light Vehicle Items

## Section 8 Body

### 8.15 Seatbelts

- a) seat belts
- b) buckles
- c) retractors
- d) shoulder on lap adjustment mechanism

#### **e) compliance label**

Reject if: "aftermarket seat belt assembly not labeled as either CMVSS or FMVSS compliant

aftermarket seat belt assembly labelled "Not For Road Use"





# New Light Vehicle Items

## Section 8 Body

### 8.15 Seatbelts

#### f) pre-tensioner and load limiter



**Manitoba  
Public Insurance**

# New Light Vehicle Items

## Section 8 Body

8.16 Supplemental Restraint System (SRS) Indicator Light

**a) air bag (SRS) indicator light**

8.17 Air Bag Cover

**a) air bag cover**

# New Light Vehicle Items

## Section 9 Tires and Wheels

### 9.1 Tires

- a) tread depth
- b) condition
- c) tire inflation pressure
- d) tire size**
- e) tire type
- f) markings
- g) directional tire
- h) weight rating
- i) clearance
- j) retreaded and recapped tires



# New Light Vehicle Items

## Section 10 Passenger Accessibility Features and Equipment

### 10.4 First Aid Kit

#### b) size and contents

Equivalent to the first aid kit content listed in Manitoba Workplace Safety and Health Regulation 217/2006, page number 74, and item 2.

#### Content of personal first aid kit

**2** A personal first aid kit must contain the following items:

- (a) 10 sterile adhesive dressings, assorted sizes, individually packaged;
- (b) five 10 cm × 10 cm sterile gauze pads, individually packaged;
- (c) a 10 cm × 10 cm sterile compress dressing, with ties;
- (d) five antiseptic cleansing towelettes, individually packaged;
- (e) a cotton triangular bandage;
- (f) a waterproof waste bag;
- (g) a pair of impervious disposable gloves;
- (h) a roll of 2.5 cm adhesive bandage tape.



# Agenda

- › Intro to Bill 14: The Traffic and Transportation Modernization Act
- › Regulations Changes
- › Definitions
- › New Light Vehicle Items for Inspection
- › **COI Forms**
- › Wrap Up



**Manitoba**  
**Public Insurance**

# Certificate of Inspection



**Manitoba  
Public Insurance**

Date Inspection Started DAY <input type="text"/> MO. <input type="text"/> YR. <input type="text"/> Date Inspection Completed DAY <input type="text"/> MO. <input type="text"/> YR. <input type="text"/> Inspection Copy DAY <input type="text"/> MO. <input type="text"/> YR. <input type="text"/>	TYPE OF VEHICLE: <input type="checkbox"/> Passenger Vehicle <input type="checkbox"/> Motorcycle <input type="checkbox"/> Truck under 4,500 kg Station Number <input type="text"/> Station Name <input type="text"/> City <input type="text"/> Mechanic Number <input type="text"/> Mechanic Signature <input type="text"/> Station Phone Number <input type="text"/> Vehicle Owner <input type="text"/> Address <input type="text"/> City <input type="text"/> Province <input type="text"/> Postal Code <input type="text"/> Phone <input type="text"/> License Number <input type="text"/> V.I.N./Frame Number <input type="text"/> Odometer Reading <input type="text"/> Mile <input type="text"/> Km <input type="text"/> Year <input type="text"/>
---	---

Mark the "F" box with a "X" when an item is rejected, "JC" if Hazardous. Mark the "P" box with an "X" when corrected or no defects found in the section.

P	R	Item	Ref #
		01 Vehicle Identification Number	Sec 1.1, M 1.1
		02 Neutral Safety Switch	Sec 5.2
		03 Accelerator Pedal	Sec 1.2
		04 Sun Visor	Sec 8.12
		05 Horn Operation	Sec 5.3, M 5.2
		06 Mirrors	Sec 8.10-11, M 8.5
		07 Windshield Wipers & Washers	Sec 8.9
		08 Defroster	Sec 8.13
		09 Speedometer, Odometer	Sec 5.1, M 5.3
		10 Windshield and Windows	Sec 8.7, 8.8, M 8.4
		11 Switches	Sec 5.8, M 7.3
		12 Clutch and Brake Pedal Pad	Sec 3.4, 5.4, M 3.2
		13 Parking Brake Transmission	Sec 3.1, M 1.5
		14 Power Brake Operation	Sec 3.4
		15 Brake Failure Indicators	Sec 3.3, M 3.4
		16 Brake Pedal Reserve	Sec 3.6, M 3.4
		17 Steering Lash and Travel	Sec 4.1-2, M 4.2
		18 Clutch Disengagement	Sec 5.4, M 1.6
		19 Handbrake	Sec M 4.1
		20 Anti-lock Brake Indicator	Sec 3.3
		21 Stability Control Indicator	Sec 4.8
		22 Lamps	Sec M 6.1
		23 Seats and Restraint Systems	Sec 8.14-15, M 8.1
		24 Supplemental Restraint Systems	Sec 8.16-17, M 5.4, 6.3

P	R	Item	Ref #
		25 Headlamp/Aux Lamp Aim	Sec 6.4, M 6.4
		26 Turn Signal Lamps	Sec 6.1, M 6.1
		27 Park, ID & Ch Lamps	Sec 6.1
		28 Side Marker Lamps	Sec 6.1
		29 Reflex Reflectors	Sec 6.3, M 6.1
		30 Back Up Lamps/Lic Plate Lamp	Sec 6.1
		31 Tail Lamps	Sec 6.1, M 6.1
		32 Stop Lamps	Sec 6.1, M 6.1
		33 Hazard Lamps	Sec 6.1, M 6.1
		34 Day Time Running Lamps	Sec 6.1, M 6.1
		35 Body & Bumpers	Sec 8.1, M 8.1
		36 Trunk	Sec 8.1, M 8.1
		37 Doors and Docks	Sec 8.5
		38 Kickboard	Sec 8.5

P	R	Item	Ref #
		39 Wheel Bearings	Sec 2.11, M 2.1
		40 Fuel System	Sec 1.3, M 1.3
		41 Exhaust System	Sec 1.4-5, M 1.4
		42 MacPherson Strut	Sec 2.9
		43 Constant Velocity Joints	Sec 1.7

P	R	Item	Ref #
		44 Trailer Hitch	Sec 5.7, M 5.6
		45 Aux Equipment	Sec 5.6, M 5.7-8

P	R	Item	Ref #
		46 Front and Rear Disc Brakes	Sec 3.8, M 3.6
		47 Front Brake Drums	Sec 3.7
		48 Rear Brake Drums	Sec 3.7, M 3.5
		49 Front Brake Lining	Sec 3.7-8
		50 Rear Brake Lining	Sec 3.7-8
		51 Wheel Cylinders	Sec 3.7, M 3.5
		52 Mechanical Components	Sec 3.7, M 3.1

P	R	Item	Ref #
		53 Hood and Safety Catch	Sec 6.1
		54 Wiring and Battery	Sec 7.1-2, M 7.1-2
		55 Vacuum/Hydraulic System	Sec 3.5-6
		56 Brake Master Cylinder	Sec 3.2, M 3.4
		57 Power Steering	Sec 4.3, M 4.2

P	R	Item	Ref #
		58 All applicable items identified by the National Safety Code Standard 11 II	Appendix A

P	R	Item	Ref #
		59 TIRE TREAD DEPTH	
		AXLE 1	
		AXLE 2	

<b>BRAKE LINING THICKNESS</b> FRONT Axle 1 <input type="text"/> Axle 2 <input type="text"/> REAR Axle 1 <input type="text"/> Axle 2 <input type="text"/>	<b>DRUM / ROTOR MEASUREMENT</b> FRONT Axle 1 <input type="text"/> Axle 2 <input type="text"/> REAR Axle 1 <input type="text"/> Axle 2 <input type="text"/>	<b>DRUM / ROTOR DISCARD LIMIT</b> FRONT <input type="text"/> REAR <input type="text"/>
--	--	--

**DEFECTS:**

\_\_\_\_\_

\_\_\_\_\_

\_\_\_\_\_

\_\_\_\_\_

\_\_\_\_\_

**REMARKS:**

\_\_\_\_\_

\_\_\_\_\_

\_\_\_\_\_

\_\_\_\_\_

To determine if this vehicle has an open safety recall issued by the vehicle manufacturer, please search the Motor Vehicle Safety Recalls database on Transport Canada's website at <http://www.tc.gc.ca/> or contact Transport Canada at 1-800-303-0510.

**- THIS INSPECTION IS NOT A WARRANTY -**

I am aware that this vehicle is unsafe and that this inspection addresses Standards of Safety and repair as prescribed by the Vehicle Equipment and Safety Inspection Regulation but does not guarantee these components will comply with the standards for any unspecified future period of time. If this vehicle is not returned repaired by the return date of  DO MM YYYY for re-inspection, a complete new inspection will be required.

Signature \_\_\_\_\_ Date \_\_\_\_\_

# Certificate of Inspection

# Certificate of Inspection

## COI Exchange Process Key Dates

- › Proposed Date: February 28, 2019
  - Discontinue using old style certificates
  - Return (in person) old unused certificates to a Manitoba Public Insurance Service Centre
- › Anticipated Date: March 1, 2019
  - Use new certificates
  - Purchase (in person) new certificates at a Manitoba Public Insurance Service Centre
  - Purchase (via mail) from Vehicle Safety head office



# Inspection Process

## Process Changes

- › Mandatory tools
  - Tint tester
  - Vernier caliper
  - Appropriate lifting equipment
- › Proposed change to the Light Duty Vehicle Inspection (LVI) fee
  - Fee will be deregulated as of March 1, 2019
  - Inspection stations no longer mandated to charge \$55 fee
  - Fee set based on inspection time and market rates

# Inspection Process

## Process Changes

- › Mandatory tools
  - Tint tester
  - Vernier caliper
  - Appropriate lifting equipment
- › Proposed change to the LVI inspection fee

# Take Away

1. Read through the Inspection Handbook
2. Become familiar with specific rejection conditions for new items that are inspected
3. Review the new COI

# Reference Materials

- |   |                                    |   |  |
|---|------------------------------------|---|--|
| 1 | Regulation                         | 5 | Inspection Program Information Package |
| 2 | Schedule 1: Light Vehicle Handbook | 6 | Start Date Info                        |
| 3 | Schedule 2: Motorcycle Handbook    | 7 | End Date for Old Forms                 |
| 4 | Training Presentation              | 8 | Links to Additional References         |

# Lesson Summary

1. Described the intent of The Traffic and Transportation Modernization Act.
2. Explained the new definitions for infrastructure equipment, agricultural equipment and trailers.
3. Summarized the Vehicle Equipment Regulation changes.
4. Reviewed the requirements for light vehicle inspections outlined in the Vehicle Equipment Regulation.
5. Reviewed the new COI and process related to form inventory.

# Thank you



**Manitoba**  
**Public Insurance**